



**KNOX-LINCOLN  
SOIL & WATER  
CONSERVATION  
DISTRICT**

# Annual Report 2019

## INSIDE THIS ISSUE

- About the District..... 2
- Meet our Supervisors ..... 2
- Conservation Leaders ..... 3
- Accomplishments..... 4-5
- Invasive Forest Pests..... 6-7
- In the Field ..... 8
- Youth Education..... 9
- Annual Sales..... 10
- Our Supporters ..... 11-12
- Financial Report ..... 13
- Our Services ..... 14
- Our Shop ..... 15

**Our office is located at:**

**893 West Street (Rt 90)  
Rockport, ME 04856  
(207) 596-2040**

**[info@knox-lincoln.org](mailto:info@knox-lincoln.org)  
[www.knox-lincoln.org](http://www.knox-lincoln.org)**

**[www.facebook.com/  
knoxlincolnsoilandwater](https://www.facebook.com/knoxlincolnsoilandwater)**



# About the District

## *Celebrating 72 Years of Conservation & Education*

Knox-Lincoln SWCD is non-regulatory community leader that responds to local natural resource issues. Our District has a long history of promoting the sustainable use of those resources through soil & water education for children and adults, as well as providing technical assistance and outreach to individuals and municipalities. These activities are guided by a board of five supervisors, one voting associate supervisor, and two non-voting associate supervisors, who serve as unpaid volunteers, as well as two part-time program managers, a part-time

### *Meet the Board of Supervisors for 2019 – Guiding the District into the Future*



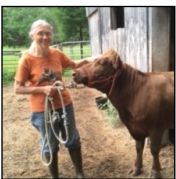
**Mark F. Hedrich (Chair)** has been an elected Supervisor since 1986. He and his wife, Linda Rose, own Agricola Farms, a diversified 117-acre farm in Union and operate Agricola Farms County Store. Mark received a B.S. in Animal and Veterinary Sciences from the University of Maine at Orono and an M.S. from Cornell University, specializing in ruminant nutrition. A former dairy farmer, Mark served as a member (and President) of the Executive Board of the Maine Association of Conservation Districts (MACD) and a member of the MACD Advisory Council. He also served as Councilman to the National Association of Conservation Districts, traveling extensively throughout the U.S. representing Maine. Mark was active with the Farm Service Agency County Committee for 21 years, serving as Chairman for 10 years. Currently, Mark is the State Nutrient Management Program Coordinator for the Maine Department of Agriculture.



**Sharon G. Chadwick (Vice-Chair)** lives with her husband, Gerald, at BenEva Farm in Warren, which was started more than 70 years ago by her grandparents, Ben and Eva Barbour. Sharon and Jerry “came home” to run the farm with Sharon’s grandparents in 1988 and still operate as a conservation farm, raising commercial Black Angus beef for the freezer and feedlots, and selling hay. They engage in conservation practices with a manure storage facility, a heavy use pad area, a livestock barn and by developing a management plan for invasive plant species. Each year, Sharon looks to judging the Annual Poster Contest and helping out at the Conservation Fair and Plant Sale.



**Jeff Tarbox (Treasurer)** is the seventh generation to live on the Tarbox family property on Westport Island, Covelly Farm. The Farm today is primarily managed forest land, in tree growth, and Jeff has taken over active management from his father. Jeff also leases 30 acres of fields and woods to a MOFGA-certified mixed vegetable organic operation, Tarbox Farm, owned and operated by Kyle DePietro and Angie Trombley, and supports their expansion of farming acreage and the implementation of NRCS-supported high tunnels and irrigation. In addition, Jeff is a partner with Kyle and Angie in the Sasanoa Brewing Company, an organic microbrewery which opened in 2018 and is also located on Jeff’s property. Jeff brings to the board his decades of experience working in project management, finance and consulting for General Dynamics, Computer Sciences, and Deloitte Consulting.



**Diane Schivera (Supervisor)** recently retired from MOFGA, where she worked as a livestock specialist since 1998. Diane enjoys working on her small farm/homestead in Appleton that includes various livestock, vegetable and pasture fields, an orchard and wood lot - all of which aim for sustainable practices. Diane can also be found volunteering at Brae Maple Farm and serving on many nonprofit Boards.



**Robyn Tierney, PhD (Supervisor)** (Colorado State University), 1992), is our most recent addition to the Board of Supervisors. She brings decades of experience and a background in ecological restoration, wildlife biology, and botany. Robyn, her husband, and dogs are enjoying their home in Union growing vegetables and a few fruit trees.

### *Associate Supervisors for 2019*

**Barrie Brusila** (*Consulting Forester, Mid-Maine Forestry; Warren*)

**Anna Fielder** (*Director of Land Conservation, Midcoast Conservancy; Wiscasset*)



# Spotlight on Conservation Leaders

At our Annual Awards Banquet in November, we recognized conservation leaders for their efforts & accomplishments.

## Distinguished Professional Service Award: David Rocque, State Soil Scientist

Recognized for over thirty years of outstanding service to the citizens of Maine, Maine's Soil & Water Conservation Districts, and to Maine's environment, David Rocque was awarded the Distinguished Professional Service Award: "With appreciation and gratitude for your dedication to Maine's Soil & Water Conservation Districts, your decades of commitment to soil and water quality and conservation education, and your unique, common-sense, cost-effective approaches for achieving protection of Maine's natural resources. You are a true friend of the earth."

Over his career, Dave has proven to be an expert in many areas, providing guidance not only to the Department of Agriculture, Conservation & Forestry (DACF) but also to Department of Environmental Protection, Department of Marine Resources, and other agencies, organizations, and individuals. His calendar rarely has a spare hour on it from early spring to late fall. In addition to being the state soil scientist, he also is a licensed professional forester, a licensed site evaluator, and has many other titles.

He has written many of the technical documents for DACF over the years – everything from siting composting operations to animal carcass disposal to proper land utilization. He provides unique, common sense, cost-effective approaches that have undoubtedly saved the citizens of this state hundreds of thousands of dollars.

Dave regularly teaches workshops on proper gravel road construction, proper septic system installation, siting of farm structures, soil hydrology, soils suitable for farming, and many others.

*Thanks, Dave, for all you do!*



Mark Hedrich (r) presented award to David Rocque (l)

## Distinguished Professional Service Award:

David Rocque,  
State Soil Scientist



**Conservation Farm of 2019:**  
Tony & Marianne Marple of  
High Meadow Farm,  
Whitefield



Barrie Brusila, Associate Supervisor (l)  
& Gavin Mclain (r)

## Excellence in Forestry Practices Award: CTL Land Management Services, Inc, Washington

Gavin Mclain and  
Kyle Overlook



Gavin Mclain (l), David Rocque (m), and Kristi Niedermann (r)

**Volunteer of the Year:**  
Kristi Niedermann, Cushing

# Year in Review—Highlights of 2019

In 2019, Knox-Lincoln Soil & Water Conservation District offered an array of workshops and special events to a wide range of clients, including local landowners and communities, throughout Knox and Lincoln counties. Our primary goal is to help individuals and communities in Knox and Lincoln counties maintain the highest quality environment possible through the wise use of land, water, forest, wildlife, and related resources. We strive to achieve this goal by providing educational workshops, materials, programs, and one-on-one assistance.

## K-12 Education Programs

- **K-5 Poster Contest - Life in the Soil: Dig Deeper**  
Program Manager Rebecca Jacobs,, presented learning sessions to 35 classrooms in 15 Knox and Lincoln county schools. More than 330 posters were submitted to the annual National Association of Conservation District’s poster contest, “Life in the Soil: Dig Deeper,” in February, Category winners were highlighted at a fundraiser at Flatbread Co. in Rockport in March.

### K-5 Poster Contest Category Awards

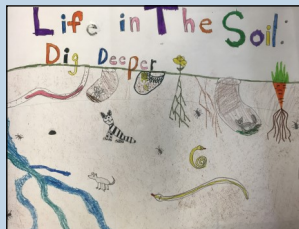
#### Grades 4-5:

Alyssa Giverdon (Grade 5),  
Thomaston Grammar School



#### Grades 2-3:

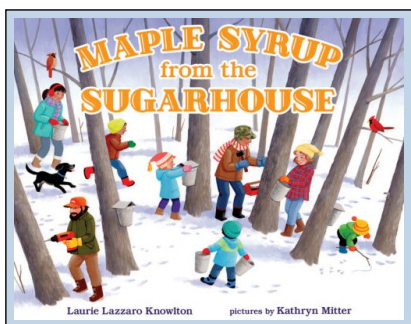
Aisley King (Grade 3), South School



#### Grades K-1:

Jimia Stetson (Grade 1),  
Edgecomb Eddy School

- **Read “ME” Agriculture**  
Through the Read ME Ag program of Maine Agriculture in the Classroom, Rebecca and volunteer readers read the book “Maple Syrup from the Sugarhouse” to 992 Knox and Lincoln county students in 63 K-4 classes at 15 schools in March.



- **Summer Ecology Camps**  
In collaboration with Meryspring Nature Center in Camden, we held two week-long Summer Ecology Camps for campers ages 4-6 and 7-9.
- **Conservation Education Fair**  
On the 4th Thursday of September, more than 800 elementary students from 16 Knox and Lincoln county schools attended our annual, and very popular, Conservation Fair. Students were introduced to a wide range of topics by 15 presenters on conservation and environmental issues.

### Conservation Fair Featured Activities and Exhibits



- **Outdoor Science Day, Cushing School**  
In October, Program Manager Hildy Ellis, along with educators from other local organizations, took part in a day-long event. Hildy’s topic was “Pollinators,” including outdoor lessons, activities and pollinator plantings with four elementary classes over the course of the day.



# Year in Review—Highlights of 2019

## Adult Workshops & Trainings

### Certified Contractor Training Courses

Every year we collaborate with the ME Department of Environmental Protection to offer trainings. In 2019, John MacLaine presented two courses in Knox and Lincoln counties for contractors, site evaluators, and code enforcement officers.

- 45 contractors attended Basic & Advanced Erosion and Sediment Control Practices (May; American Legion Hal, Damariscotta)
- 35 contractors attended Beginning Erosion and Sediment Control Practices (Oct; Union Town Office)

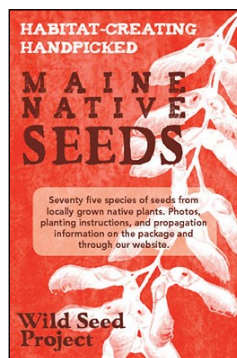
### Septic Systems for Homeowners

- Dave Rocque, state soil scientist, captivated 40 residents with all there is to know (and more) about home septic systems (May; Camden Public Library)

### Beginning Farmer/Gardener Workshop Series

Presented in partnership with Maine Coast Heritage Trust (MCHT) and Mid-Coast Farmers Alliance

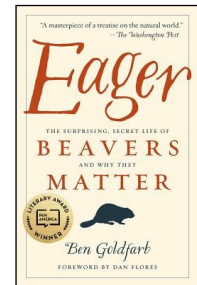
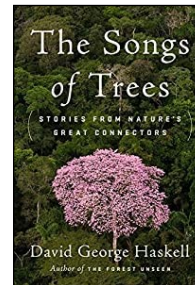
- Aaron Englander, Farm & Program Manager with MCHT presented *Korean Natural Farming Practices* to an audience of 25. (Jun; Erickson Fields Preserve, Rockport)



- 16 farmers and gardeners attended *Nutrient Management in High Tunnels*, presented by Bruce Hoskins, UMaine Soil Lab. (Oct; Sheepscoot General, Whitefield)
- Heather McCargo of Wild Seed Project lead a hands-on workshop for 20 participants on *Growing Native Plants from Seed*. (Nov; Aldermere Farm, Rockport)

### Environmental Book Club

- Rebecca Jacobs led two popular book groups at both Bermen and Appleton Libraries. *The Songs of Trees* by David Haskell (Jan, Bremen Library) and *Eager: The Surprising Secret Life of Beavers and Why They Matter* by Ben Goldfarb. (Oct; Bremen and Appleton libraries)



### Conservation Landscaping Series

Program managers, Rebecca Jacobs and Hildy Ellis presented the following programs in 2019:

- Native Groundcovers (Feb; Wiscasset Garden Club)
- Conservation Landscaping (Feb; Boothbay Region Garden Club)
- Buffer Plantings & Rain Gardens for Water Quality (Mar; Maine Herb Society, Bangor)
- Native Plants for Backyard Habitats (Apr; Washington Lakes Watershed Assn & Gibbs Library, Washington)
- Buffer Planting for Water Quality (Apr; Boothbay Region Water District)
- Buffer Planting for Water Quality (Jul; Washington Lakes Watershed Assn, Washington)
- Native Groundcovers (Nov; Warren Field & Garden Club)

### Natural History & Native Plants

Hildy Ellis lead two popular walk n talks

- Bog Ecology (May; Hidden Valley Nature Center, Jefferson)
- Fern ID & Ecology (Jul; Belfast Bay Watershed Assn; Stover Preserve, Belfast)



### Invasive Plant Walk n Talks

Presented by District staff

- Boothbay Region Land Trust (May; 20 attendees)
- Georges River Land Trust (Sep; 13 attendees)

# Spotlight on Invasive Forest Pests

Maine's 16 conservation districts are working with the Maine Department of Agriculture Conservation & Forestry to educate Mainers about the threats posed by invasive pests to yard trees, woodlands, and forests. Since 2015, we have been providing outreach and presentations to local residents focused on emerald ash borer, Asian longhorned beetle, and hemlock woolly adelgid.

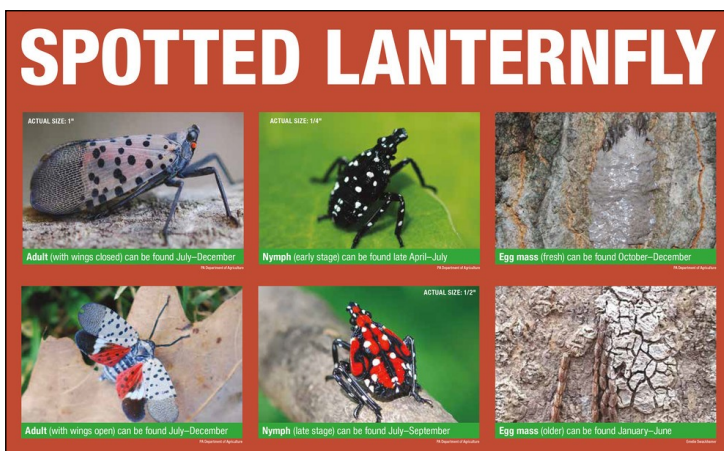
In 2020, the focus of that outreach will be aimed at pests not yet found in Maine (and we'd like to keep it that way!): Asian longhorned beetle, oak wilt fungus, and the insect highlighted below, spotted lanternfly.

## An Emerging Invasive Threat: The Spotted Lanternfly

There is a new regional concern that is likely to impact the U.S. fruit, horticulture, and timber industries. Native to China, the spotted lanternfly (*Lycorma delicatula*) is a large planthopper that can attack a wide variety of crops and trees, including grape, apple, hops, pine, and stone fruits. Spotted lanternfly was discovered in Pennsylvania in 2014, and has since spread to New Jersey, Delaware, and Virginia.

There is a strong association between the spotted lanternfly and an invasive tree species known as Tree of Heaven (*Ailanthus altissima*). Research suggests that Tree of Heaven may be needed for spotted lanternfly to complete development. We are currently trying to assess the risk of spotted lanternfly to Maine's various industries by tracking locations of Tree of Heaven. If you have seen this invasive tree in Maine, please take photos and report sightings to [invasives.mnap@maine.gov](mailto:invasives.mnap@maine.gov).

Source: *Invasive Pest News: Winter 2019* by Maine Department of Agriculture, Conservation and Forestry



The lanternfly feeds on the woody parts of host plants by sucking sap with its straw-like mouthparts. This feeding causes wilting, dieback and eventual mortality of the plant, as well as promotes the accumulation of honeydew, which promotes sooty mold. Testimony from a PA winery and fruit orchard describes nearly 90% grape loss and loss in fruit quality in less than 3 years after it was discovered in the area.

A major concern is how easily it can spread long distances. Adults will lay egg masses on any smooth surface. Most of southeast PA is quarantined to minimize spread out of infested counties, but cryptic egg masses may be easy to miss, and adult planthoppers can easily hitchhike in conveyances.

## Don't Move Firewood!

**Transporting firewood can transport pests that live in or on the wood to new regions.**

If you are camping - or going up to your camp - remember, **do not transport firewood!** You can save the woods from invasive pests by finding local sources of wood at Firewood Scout, [www.firewoodscout.org/s/ME/](http://www.firewoodscout.org/s/ME/).

## Do you sell firewood?

**Consider joining Firewood Scout!**

Firewood Scout is an online resource to help campers and other users of firewood find local sources of firewood. Maine is part of the network! Add your business so that people can find you. Or contact [bugwatch-me.agr@maine.gov](mailto:bugwatch-me.agr@maine.gov) to receive a **BURN IT WHERE YOU BUY IT** banner.





# INVASIVE Forest Pests

Keep these invaders  
out of Maine!



**ASIAN  
LONGHORNED  
BEETLE**

Trees infested with Asian Longhorned Beetle will eventually die



**SPOTTED  
LANTERNFLY**

The Spotted Lanternfly sucks the life out of fruit and forest trees



**OAK WILT**

Millions of oak trees in the U.S. have died of Oak Wilt disease

## FACT

**Firewood isn't dead** – A NH study found an average of 35 insects per piece of confiscated out-of-state firewood.

Moving firewood spreads forest-destroying insects and disease.

## FACT



Maine Association  
of Conservation Districts



# Spotlight on Conservation in the Field

## Experts on the Land

### Invasive Plant Mapping & Management Plans

Rebecca Jacobs, Program Manager at KLSWCD, is the expert in the field using new technology, *iMap Invasives*, to map infestations of invasive plants and create invasive plant management plans in collaboration with Maine Natural Areas Program. In 2019, Rebecca consulted with farmers, landowners, and nature preserves to identify and address problem areas in Lincoln and



Knox counties. She will continue this work in 2020 with an expanded scope of properties.

“Invasive plants are a direct threat to what we value about Maine’s natural and working landscapes. The aggressive growth of invasive plants increases the

costs of agriculture, can affect forest regeneration, threatens our recreational experiences, and potentially decreases property values. Species like Japanese barberry and multiflora rose can form thorny, impenetrable thickets in forests and agricultural fields. Aquatic invasives can choke waterways, making it difficult to boat or swim.

“Invasive species are the second-greatest threat to global biodiversity after loss of habitat. Invading plants out compete native species by hogging sunlight, nutrients, and space. They change animal habitat by eliminating native foods, altering cover, and destroying nesting opportunities. Some invaders are so aggressive they leave no room for our natives.



“Our natural landscape is precious. Its future depends on the choices we make. When buying plants or moving them from



place to place consider whether the plants are likely to escape. Plants advertised as fast growing, prolific, and tolerant of many growing conditions are often the ones that become invasive. Maine just won't be Maine if the plants dominating our landscape are all from away. Please verify that plants you buy for your yard or

garden are not invasive. Ask your local garden supplier to include more native species. Consider replacing invasive plants in your garden with non-invasive alternatives.”

Source: [https://www.maine.gov/dacf/mnap/features/invasive\\_plants/invasives.htm](https://www.maine.gov/dacf/mnap/features/invasive_plants/invasives.htm)

## Experts on the Water

### Improving Water Quality in Sheepscot & Dyer River Watershed



Knox-Lincoln SWCD entered into a cooperative agreement grant with Natural Resources Conservation Service (NRCS), to conduct outreach about NRCS efforts to implement conservation practices on farms and woodlands that will improve water quality in the Sheepscot / Little Dyer River watershed. “NRCS is conducting a watershed assessment in the sub-watersheds of the Sheepscot River including the Dyer River Watershed as part of the National Water Quality Initiative (NWQI) readiness phase. A component of the readiness phase is the development and implementation of an outreach plan /strategy to maximize producer participation in the watershed with particular emphasis to producers in critical source areas of the tributaries. The water quality improvements from the NWQI effort can only be achieved with active participation by producers in the watersheds. Outreach and education will be needed to accelerate participation by landowners/operators in these targeted areas.” \*

KLSWCD program manager Hildy Ellis will develop and oversee implementation of the outreach effort and. The resulting plan will include a strategy to do one-on-one farm visits to producers in critical source areas to maximize potential participation.



**You can help map  
invasive plant species!**

Report on iMap Invasives:  
[www.maine.gov/dacf/mnap/  
features/invasive\\_plants/](http://www.maine.gov/dacf/mnap/features/invasive_plants/)





# Spotlight on Youth

## Farmer in the Classroom, Students on the Farm



For the past four years, District program manager Rebecca Jacobs has teamed up with farmer Cheryl Denz of Terra Optima Farm in Appleton and local schools to teach hands-on agricultural lessons in the classroom, culminating with a farm visit field trip in June. During the six-month program starting in January, Cheryl paid monthly visits to a Lincoln County fourth grade class and a Knox County fourth grade class to teach the history & biology of apple trees, demonstrate planting & maintenance techniques, and provide apple product tastings.

The primary goal of the program is to expose students to agriculture to see where our foods are grown. Through past classroom experience, we became aware that despite living in an agricultural state, students are disconnected from farm to plate. The innovative program bridges this gap and aids already burdened educators by bringing new agricultural literacy to hungry minds.



*This project was funded through the generosity of  
Maine Agriculture in the Classroom.*

## Summer Ecology Camps at Merryspring Nature Center, Camden

Summer Ecology Camps are made possible through a partnership between Merryspring Nature Center and Knox-Lincoln Soil & Water Conservation District. The camp sessions provide exciting, outdoor nature experiences for young children. Through gardening, games, experiments, and observation, campers enjoy an introduction to ecology and the natural world in these part-day camps. Select activities include bug hunts, nature hikes, tree and animal identification, an ocean touch tank, and more!

**Eco-Explorers** is for children ages 7 to 9 who are looking to explore the natural world, conduct experiments, and get up-close-and-personal with the plants, insects, and animals in their Maine backyards.



**Little Sprouts** is great for campers ages 4-6 who love to be outdoors, discover the world around them, play outdoor games, and get creative.

Many children return year after year to continue to learn about nature!

## Conservation Education Fair

Every year on the 4<sup>th</sup> Thursday of September, we bring Knox-Lincoln students to the Union Fairgrounds for a day of conservation and environmental education. State and local professionals and volunteers engage these young people in interactive demonstrations and activities about food, farming, beekeeping, marine resources, forestry...and more.

On September 26, 2019, more than 800 elementary students from 16 Knox and Lincoln county schools attended our annual, and very popular, Conservation Fair. Fifteen presenters introduced students to a wide range of conservation and environmental issues.

# Spotlight on Conservation Sales

## Annual Spring Plant Sale

Over the past nine years, Knox-Lincoln SWCD has expanded the traditional “shrub sale” into a springtime event that not only provides high quality fruit and berry plants to local residents, but also native trees, shrubs and perennials, *and* includes educational exhibits and vendors selling outdoor garden accessories.



Our goal is to provide the community with high quality, bareroot plants at a reasonable price. We are proud that our selections are excellent for conservation and ornamental plantings, AND great choices for pollinators, beneficial insects, and wildlife.

In 2019 – *with the help of 40+ volunteers who contributed 400+ hours of their valuable time to label plants and pack orders* – we sold 40 varieties of fruit trees and berries (and other edibles), close to 60 varieties of native trees and shrubs, and 46 varieties of certified-organic, field-grown native perennials and herbs from Rebel Hill Farm in Liberty, ME. While many of the woody plants come “from away,” we have increased the number of “Maine grown” selections with trees and shrubs from Crystal Lake Farm & Nursery in Washington, ME.



The 12+ page catalog and order form is a resource all on its own! It includes a description of each variety, planting tips, and links to fact sheets. Our online catalog has all the same information – plus pictures of the plants. And, on top of all of that, the sale is our single biggest fundraising event of the year!

With all these changes, some things remain the same: Plants may be purchased by pre-order – either online or by USPS; or by cash, check or credit & carry on the days of the sale, which is traditionally the Saturday and Sunday before Mother’s Day.

## Spring Trout Sales

We sponsor an annual trout stocking sale for your home or farm pond. Homeowners come back year after year for the rainbow and brook trout. This year, brook trout were supplied by a new hatchery, MicMac Fish Farm in Caribou, ME.



## Backyard Composting and Rain Barrel Sale

In cooperation with Maine Resource and Recovery Association, we offer local residents the opportunity to improve soil and conserve water right in their own backyards at deep discount prices. It’s easy with the tried-and-true 80-gallon Earth Machine backyard composter and the 55-gallon System rain barrel. Both are made of recycled materials, designed to fit into any landscape, and are offered at wholesale prices. The Earth Machine composter has an “in at the top/out at the bottom” design and a 10-year warranty. The System rain barrel fits under a downspout to take advantage of roof run-off for garden watering and has built-in mosquito mesh and overflow capability.

We also offer a 3’ x 4’ trap wire bin made by Brooks Trap Mill in Thomaston that has a  $\frac{3}{4}$  cubic yard capacity. This larger bin, made of coated lobster trap wire, is perfect for yard debris and has the seal of approval from some of Maine’s top composting experts.



To make it even easier to convert kitchen scraps into soil conditioner, we also offer accessories: a 2-gallon Sure-Close kitchen scrap pail with vented, locking lid that keeps odors in and flies out; Wingdigger compost aerator and turner to mix compost layers and decrease compaction without straining your back; and the REO-Temp compost thermometer with a 20” stem to monitor interior temperatures and turn anyone into a serious composting enthusiast.



# Spotlight on Volunteers

The success of the District programs would not be possible without the dedicated efforts of our volunteers and supporters. In 2019, we benefitted from **500+ hours of volunteer service**. Many volunteers return year after year and join us in the summer for fun and relaxation at our Volunteer Appreciation Barbecue.

## A Special Thanks To.....

*Sharon Abair*

*Eliza Bailey*

*Joan Barrett*

*Eileen Bayer*

*Nancy Blake*

*Carrie Braman*

*Helen Burlingame*

*Shelby Chadwick*

*Sharon Chadwick*

*Steve Cowles*

*Sarah Crosby*

*Cheryl Denz*

*BJ Dobson*

*Jamie Doubleday*

*Jackie Dunham*

*Polly Gibson*

*Anne Goodale*

*Donna Gray-Hanc*

*Chris Haines-Carter*

*Karen Haney*

*Andrea Hawks*

*Mark Hedrich*

*Brenda Hendrickson*

*Dottie Hokkanen*

*Ike Johnson*

*Mitch Kihn*

*Nancy Killoran*

*Colin & Nadine Lindley*

*Lisa Looke*

*Jan MacDonald*

*Mimi Moore*

*Kristi Niedermann*

*Elaine Pew*

*Gail Presley*

*Karin Rector*

*Marina Schauffler*

*Diane Schivera*

*JB Smith*

*Ken Stewart*

*Donna Strawser*

*Foster Stroup*

*Maisie Sturtevant*

*Kim Sullivan*

*Jeff Tarbox*

*Roberta Tatro*

*Erika Taylor*

*Mary Thompson*

*Robyn Tierney*

*Jean Vose*

*Amanda Wheelis*

*and anyone we may have missed!*



# Spotlight on Business Supporters

*Knox-Lincoln Soil & Water Conservation District* extends our sincerest thanks and appreciation to the following agencies, businesses and individuals, who through their support in 2019, made it possible for us to provide educational programs and technical assistance to the residents of Knox and Lincoln counties.

*Please thank them the next time you shop or connect with the following:*

## **ME Department of Agriculture, Conservation, & Forestry**

**Commissioners, County of Knox**

**Commissioners, County of Lincoln**

### **Natural Resources Conservation Service**

Agricola Farm, Union

Boothbay Region Garden Club

Final-Lee Acres and Wandering Goat, Union

Fireside Pottery, Warren

Fresh Off The Farm, Rockport

Guini Ridge Farm, Appleton / Rockport

Merryspring Nature Center, Camden

Midcoast Conservancy, Wiscasset

Mystic Woodworks, Warren

Plants Unlimited, Rockport

Rebel Hill Farm, Liberty

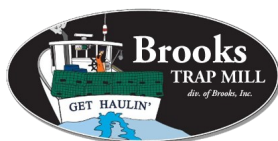
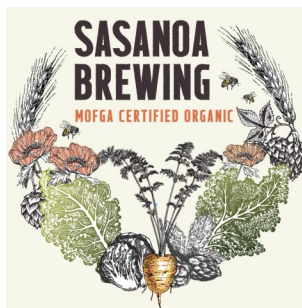
Rockport Garden Club

Savage Oakes Vineyard, & Winery, Union

Union Fair Society, Union

Waldo County SWCD

Warren Field & Garden Club





# Spotlight on KLSWCD

## District Supervisors & Staff

### District Supervisors

- Mark Hedrich, Chair
- Sharon Chadwick, Vice-Chair
- Jeff Tarbox, Secretary/Treasurer
- Diane Schivera
- Robyn Tierney

### Associate Supervisors

- Barrie Brusila
- Anna Fielde-r

### Lifetime Honorary Supervisors

- Robert Spear
- Barry Tibbetts

### District Staff

- Hildy Ellis, Program Manager
- Rebecca Jacobs, Program Manager
- Julie Sells, Administrative Assistant
- Mary Thompson, Conservation Technician

### Consulting Engineer

- Stephen Roberge

### NRCS Staff

#### *Augusta Field Office (Lincoln County)*

- Peter Abello
- Xandy Brown
- Paula Salazar

#### *Belfast Field Office (Knox County)*

- Ron Desrosiers
- Stephanie Landry

### Engineers

- Lori Richter, Agricultural Engineer (Lincoln County)
- Adam Catrell, Asst. State Engineer (Knox County)

2019 Financial Report			
<b>2019 Operating Expenses</b>		<b>2019 Operating Income</b>	
Salaries/Staff training	81,143.28	County & State Funding	83,550.00
Payroll Expenses	7,787.61	Uncategorized	10,000.00
Technical Assistance	1,061.00	Technical Assistance Fees	15.00
Education Programs	5,170.54	Education Programs	9,151.50
Fundraising Expenses	34,110.24	Fundraising & Donation	43,617.05
Annual Meeting	1,824.44	Annual Meeting	1,628.15
Grant Expenses	10,883.54	Grant Income	11,627.20
Travel/Meetings	3,156.60	<b>Total Operating Income</b>	<b>159,588.90</b>
Dues	3,185.00		
Fees/Permits	20.00	<b>2019 Non-operating Income</b>	
Office Supplies	1,645.79	Interest Income	87.91
Accounting Fees	4,119.20	<b>Total Non-Operating Income</b>	<b>87.91</b>
Computer Tech Support	467.50		
Printing & Postage	1,661.21	Total Income	159,676.81
Advertising & Promotion	150.00	Total Expense	169,921.88
Rent/Utilities/Equip	11,529.16	Net income	-10,245.07
Conservation Fair	1,628.42		
Subscriptions	323.07		
Other	55.28		
<b>Total Expense</b>	<b>169,921.88</b>		

# Spotlight on Conservation Services

## Conservation Technician Services

Knox-Lincoln SWCD can provide low cost technical assistance and engineering design services to towns, organizations and individuals in Knox and Lincoln counties. Some of the services we provide are:

### Erosion Control Technical Assistance

District staff meets with landowners, private road associations, and municipal officials to provide options for addressing problems that impact water resources including pre- and post-construction activities. Assistance includes site visit and written recommendations.

### Permit-By-Rule Preparation

Preparation of Maine DEP's Permit-By-Rule for water quality improvement projects. Includes site visit as well as document preparation. (Landowner serves as agent on documentation.)

### Natural Resource Protection Act Permits (NRPA)

District staff prepares Maine DEP's Natural Resource Protection Act Permits for water quality improvement projects. Includes site visits as necessary as well as document preparation. (Landowner serves as agent on documentation.)

### Natural Resource Assessments

Landowners and municipalities or potential buyers looking to better understand their land as it exists and how to manage it for specific uses such as blueberry fields, forestry, water quality/quantity issues, soil health, hayland and pasture management. Assistance includes a site visit and written recommendations.

### Nutrient Management Plans

District staff prepares plans to meet State of Maine standards. (Note: This plan will not meet criteria for NRCS EQIP programs.) Work will include site visit and written plan.

### Soil Testing

District staff will extract soil for testing to specifications of landowner. Sample(s) will be sent to the University of Maine lab. Results will be sent directly to the landowner. (If desired, a separate time may be set up to review the recommendations.)

### Stream Crossings

District staff provides assistance with planning and/or maintenance of culvert or open bottom installations of stream crossings. Includes site visit, written recommendations and engineered drawings as necessary.

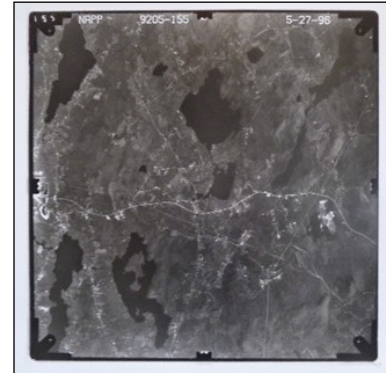
### Third Party Assessments

District staff provides recommendations to landowners and/or municipalities regarding potential or existing erosion problems due to construction activities. Assessment includes recommendations during and/or after construction on best management practices.

## At the Office

### Aerial Photos

The District office has a large collection of aerial photos taken of Knox and Lincoln counties in 1940, 1966, 1980, 1991, and 1996, as well as some ice storm photos.



### Soil Test Kits

We also have Soil Test Kits and a variety of planting guides on hand for you to pick up at your convenience. It is always a good idea to test your soil and follow the recommendations before planting a new garden areas.

## On our Website

Our website includes a wealth of resources for soil and water conservation needs. From nutrient management to plant care fact sheets, check out our site first at [www.knox-lincoln.org](http://www.knox-lincoln.org)



**Be sure to like us on Facebook:**  
[www.facebook.com/knoxlincolnsoilandwater/](https://www.facebook.com/knoxlincolnsoilandwater/)



# Spotlight on Our Shop

*Now available to purchase at our office for information and gift ideas!*

## Maine Invasive Plants Field Guide

This new field guide was released by Maine Natural Areas Program in June 2019.

The 3.75" by 8" guide covers **46 species** of terrestrial and wetland invasive plants and is waterproof, portable, and ring-bound to allow for future additions. Each species account includes key identification characteristics, growth form, habitats invaded, control methods, similar native and non-native plant species, and current status of the plant in Maine.

**\$24.95 plus 5.5% sales tax = \$26.32**

USPS shipping and handling (ME) \$3.60

**Total shipped in Maine \$29.92**



## Forest Trees of Maine

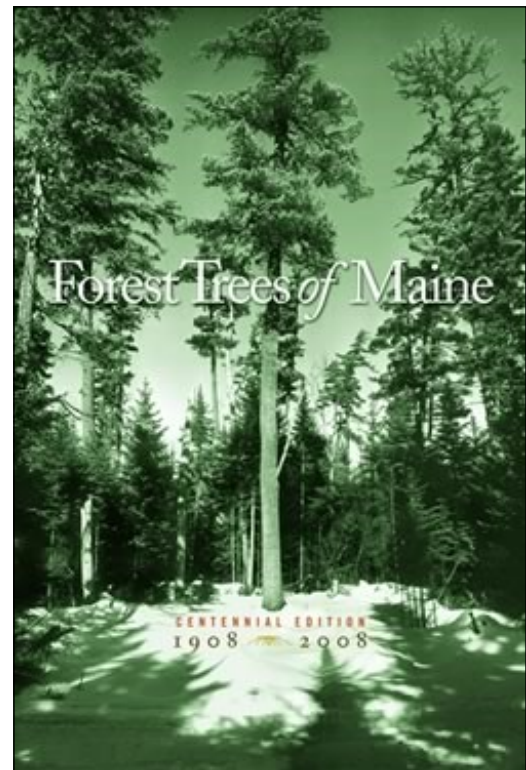
The Centennial Edition of Forest Trees of Maine was published by the Maine Forest Service in 2008. The 6" x 9" book has 176 pages and includes summer and winter ID keys, glossary, index, and descriptions of **78 tree species**, all but a few native to Maine.

Tree habit, bark, leaves, flowers and fruits, twigs and wood characteristics are described for each species as well as color photos, distribution map and the 2008 Maine Register of Big Trees entries, as well as historical photos and information.

**\$15.00 + 5.5% sales tax = \$15.83**

USPS shipping/handling (ME) \$3.60

**Total shipped in Maine \$19.43**



### Contact Us:

893 West Street (Rt 90)

Rockport, ME 04856

(207) 596-2040

[info@knox-lincoln.org](mailto:info@knox-lincoln.org)

[www.knox-lincoln.org](http://www.knox-lincoln.org)



893 West Street, Rockport, Maine 04856

*Save the Date!*  
**2021 Spring Plant Sale**  
**Union Fairgrounds**  
**Sat, May 8 & Sun, May 9**

*Pre-order with scheduled curbside pick-up only\**

*\*(unless there's a vaccine!)*

*Same great section of fruits & berries,  
native trees, shrubs & perennials  
at great prices!*